

SAMPLE PREPARATION

Make sure Strips, Buffer and water are at room temperature before testing

Make sure you have scanned the Multi-Matrix Barcode Card (MMBC) that matches your kit lot

Set Incubator at 22°C

You will need a 100 µL pipette



1. Collect and grind representative sample such that $\geq 95\%$ passes through a 20 mesh sieve



2. Carefully weigh out and add a 20 to 50 gram sub-sample to container



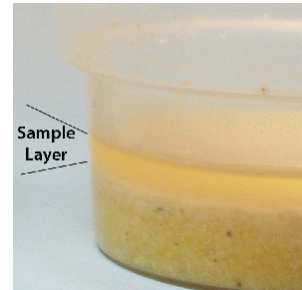
3. Add 2X (corn) or 3X (wheat, bran, sorghum) of 50% ethanol (eg, 20g corn: 40 mL / 20g wheat: 60 mL)



4. Cover and shake on a mechanical shaker at highest speed for 1 minute (or vigorously by hand, 2 min.)



5. Take a portion of extract and centrifuge for 30 seconds at 2000 x g (not RPM) - follow manufacturer's instructions



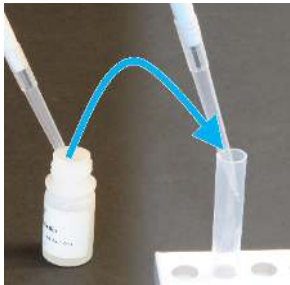
- 5b. Alternatively, corn samples only may be allowed to settle into layers - avoid particulates when drawing up sample

TEST PROCEDURE

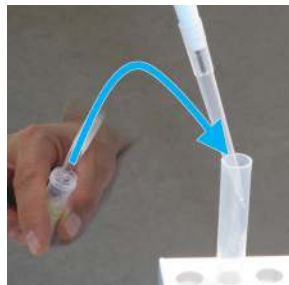
(more detailed instructions in the Product Insert)

Ensure Incubator has reached 22°C

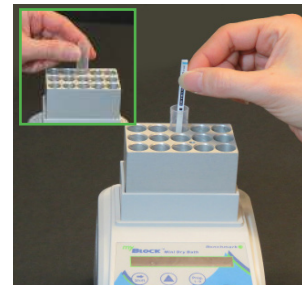
*Note: acclimation is only required when the ambient temperature is unknown or outside of 20-24°C (68-75°F)



6. Add 100 µL Buffer to a reaction tube



7. Transfer 100 µL clarified extract to the tube; mix well with pipette tip (stir or pipette up and down)



8. Place tube in Incubator and acclimate for 2 min.*; then add QuickTox Strip; wait 5 minutes for results

QuickScan TEST RESULTS

(more detailed instructions in the QuickScan User Manual)

9. Remove strip from vial immediately after the 5 minute test time. Cut off and discard bottom pad with arrow tape. (No drying step!)

10. Place in the QuickScan carrier and slide carrier in. Click "Read Test" on Main Menu. Results are reported between 50 and 520 ppb.

11. Results Screen will appear when scanning is complete. Enter sample identification data and use buttons to save or print report.